



## **Wiki Installation Guide**

This guide describes the steps required for installing the BlueBridge Wiki Extensions for Microsoft SharePoint.

### TABLE OF CONTENTS

<b>1. BlueBridge Wiki Extensions Installation Guide .....</b>	<b>3</b>
<b>2. Installation .....</b>	<b>4</b>
<b>2.1 Preparing the Installation .....</b>	<b>5</b>
<b>2.2 Installation Wizard .....</b>	<b>6</b>
<b>2.3 License Key .....</b>	<b>14</b>
<b>2.4 Preparation for Import .....</b>	<b>15</b>
<b>2.5 Adding your Logo to Exports .....</b>	<b>19</b>
<b>2.6 Installation via STSADM .....</b>	<b>21</b>
<b>2.7 Wiki Webparts .....</b>	<b>26</b>
<b>3. Upgrade .....</b>	<b>27</b>
<b>3.1 Upgrading the webconfig .....</b>	<b>29</b>
<b>4. Uninstalling .....</b>	<b>33</b>
<b>4.1 Using the Wizard .....</b>	<b>34</b>
<b>4.2 Using the Central Administration .....</b>	<b>36</b>
<b>5. Activation .....</b>	<b>40</b>
<b>5.1 Site Feature .....</b>	<b>41</b>
<b>5.2 Wiki Fields .....</b>	<b>42</b>
<b>5.3 Rich Text Editor .....</b>	<b>44</b>
<b>6. Help and Support .....</b>	<b>47</b>
<b>6.1 Release Notes .....</b>	<b>48</b>

### 1. BlueBridge Wiki Extensions Installation Guide

#### BlueBridge Wiki Extensions for Microsoft SharePoint

##### Installation Guide

BlueBridge Technologies AG  
Stockgasse 11  
96155 Buttenheim  
Germany

<http://wiki.bluebridge.de>

This document describes the steps for installing the BlueBridge Wiki Extensions for Microsoft SharePoint.

Let's move on to preparing the installation.

Download this guide as a PDF document:



## 2. Installation

### Installation

The Wiki Extensions are provided as a SharePoint solution. An [installation wizard](#) will guide you through the installation process, or alternatively you can install the solution manually on the server.

In most cases, we recommend using the wizard, but if you would prefer to install manually, then please refer to the guide [here](#).

### 2.1 Preparing the Installation

#### Preparing the Installation

The Wiki Extensions are provided as a SharePoint solution. An installation wizard will guide you through the installation process, or alternatively you can install the solution manually on the server. In most cases, we recommend using the wizard, but if you would prefer to install manually, then please contact us and we will provide you with a separate installation file.

Note: The Wiki Extensions require a valid License Key to run, even in trial mode. A 30 day trial key should, however, be automatically installed if you follow the steps in this installation guide.

If you want to use the function “Add From Template”, you must manually edit the web.config.

The first thing to do is to download a copy of the latest version of the Wiki Extensions from our website <http://wiki.bluebridge.de>

Make sure you save this on your server's hard drive and unzip it before proceeding.

The Extensions are installed directly on the server where SharePoint is being used. They are compatible with WSS 2007 and MOSS 2007.

The next step: Installation

### 2.2 Installation Wizard

#### Installation Wizard

Before you install: Unzip the installation package (zip file) to your server's local hard drive.

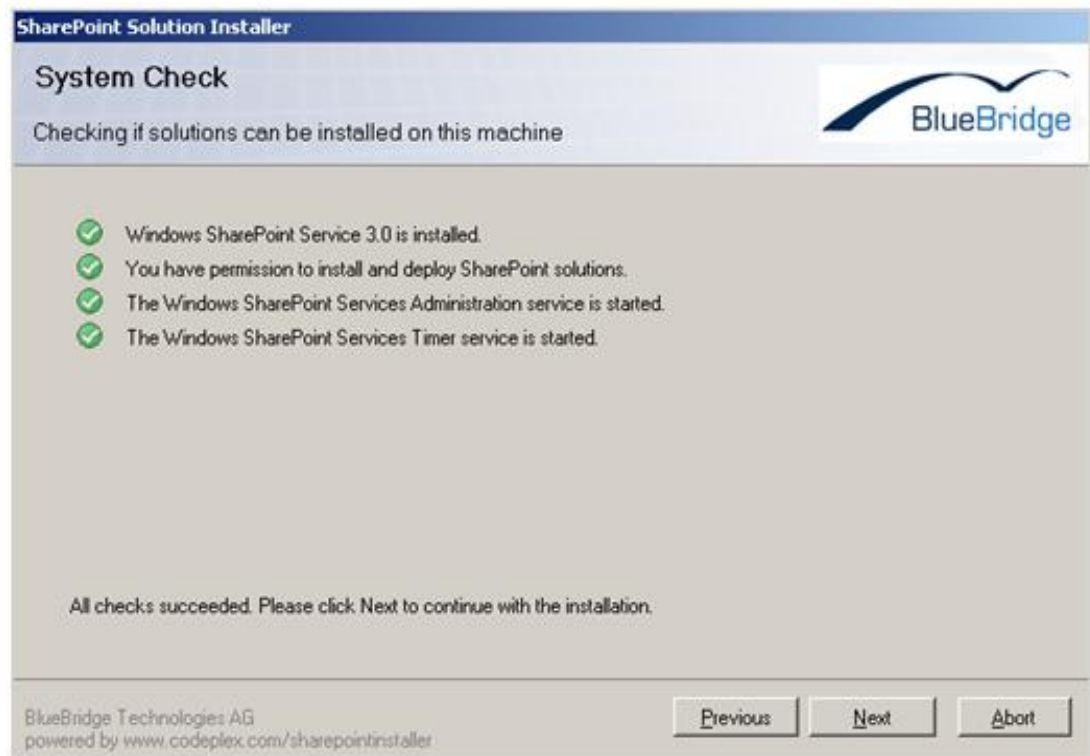
Note: Do not start the setup from a network drive (fileshare).

#### Start installation

Start the installation with "setup.exe"



Click **Next**:




Click **Next** if all the tests were carried out successfully and are displayed with a green flag.

## Choose the Solutions to Install







**BlueBridge Wiki**

### Solution Setup

Please select the operation you wish to perform on each solution.



Solutions:

Solution	Installed Version	Latest Version	Status	Operation
BlueBridge.Core		2.1.5901.0	Not installed.	Install 
BlueBridge.Wiki		1.1.3311.0	Not installed.	Install 
BlueBridge.Wiki.Trial		1.0.0.0	Not installed.	Install 
BlueBridge.Wiki.Stapling		1.1.0.0	Not installed.	Install 
BlueBridge.Wiki.Console		1.1.0.0	Not installed.	Install 
BlueBridge.Wiki.WebParts		1.1.0.0	Not installed.	Install 

BlueBridge Technologies AG  
powered by [www.codeplex.com/sharepointinstaller](http://www.codeplex.com/sharepointinstaller)

[Previous](#) [Next](#) [Abort](#)

### Required Components

Install the solutions "BlueBridge.Core" and "BlueBridge.Wiki". If you are installing for the first time, you should also install the solution "BlueBridge.Wiki.Trial". This automatically implements a 30 day trial license key. If you have already purchased a license, you will not need to install this solution.

### Optional Components

The other modules add extra features:

- Webparts - adds the Wiki Navigation webpart to the webpart gallery. Webparts for related links and documents are available on request.
- Stapling - the Wiki Extensions are automatically activated when new wiki sites are created.



## License Agreement



Review the terms of the end user license agreement and accept them before clicking **Next**.

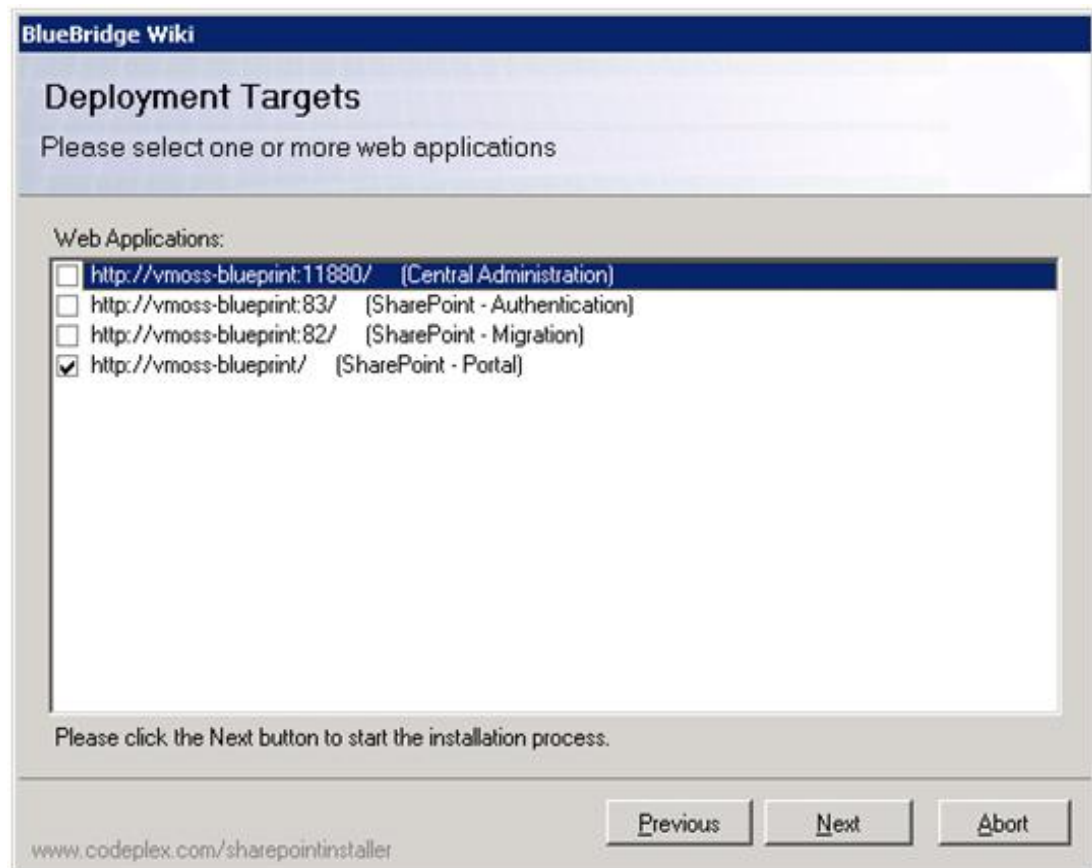
## Where the Extensions should be Installed

The installation wizard checks all the available web applications on your server to see where the Extensions can be installed. In the example above, we have chosen to install the Extensions on our Portal Server (vmoss-blueprint).

Note: By default you will find at least two web applications on your server:

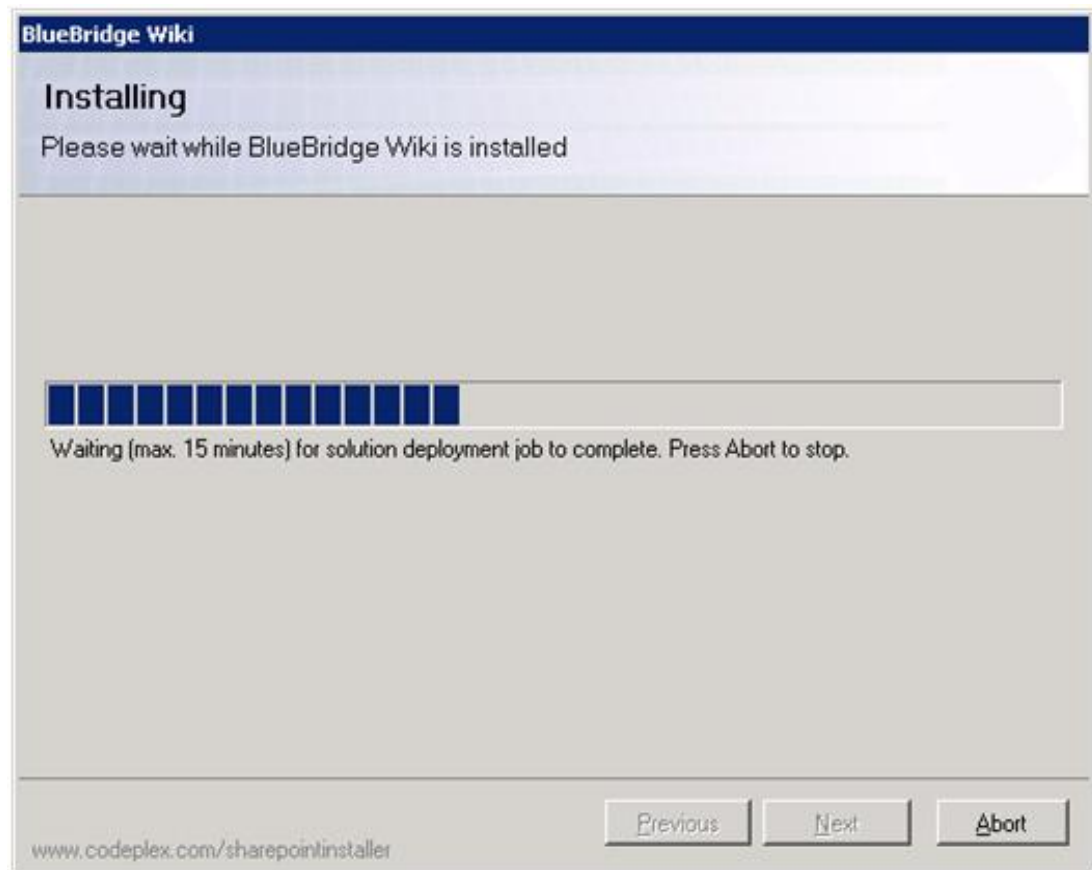
- Central Administration
- The web application for the SharePoint content sites (normally, this will be port 80 or the default web application).

Since the Wiki Extensions are not needed on the central administration, you will only have to install them on the content sites.

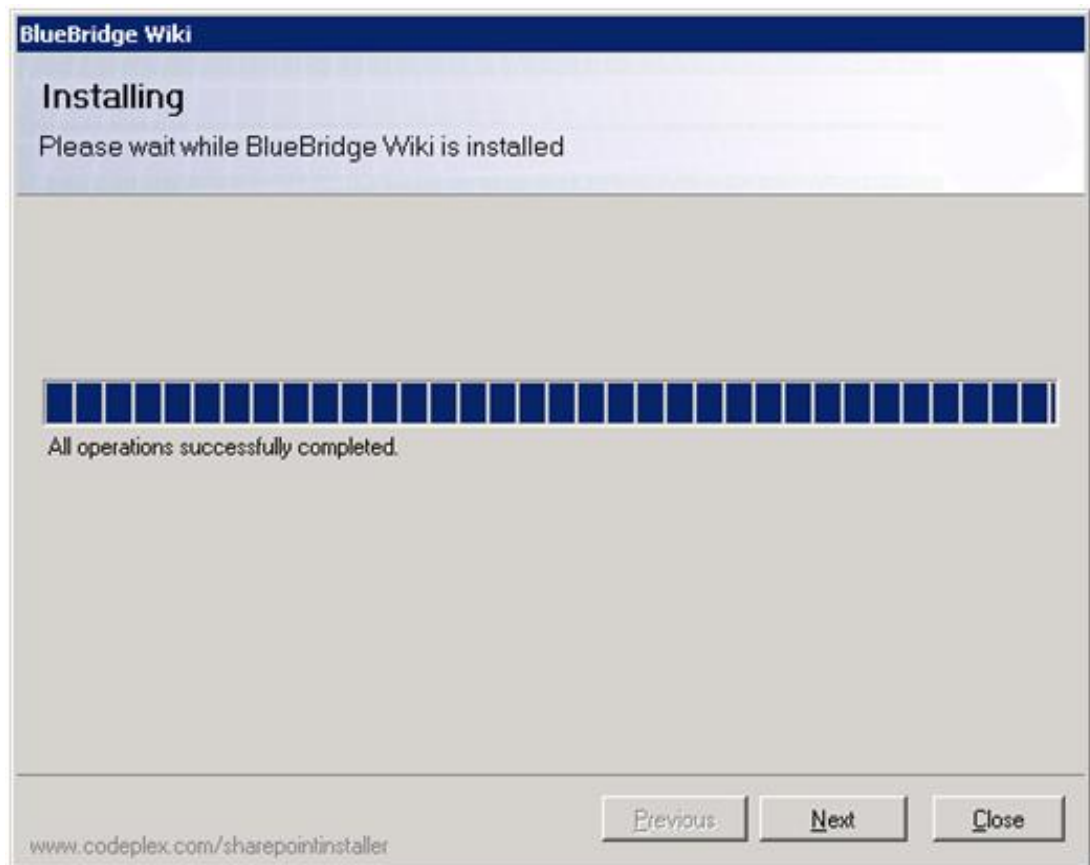


## Finalising the Installation

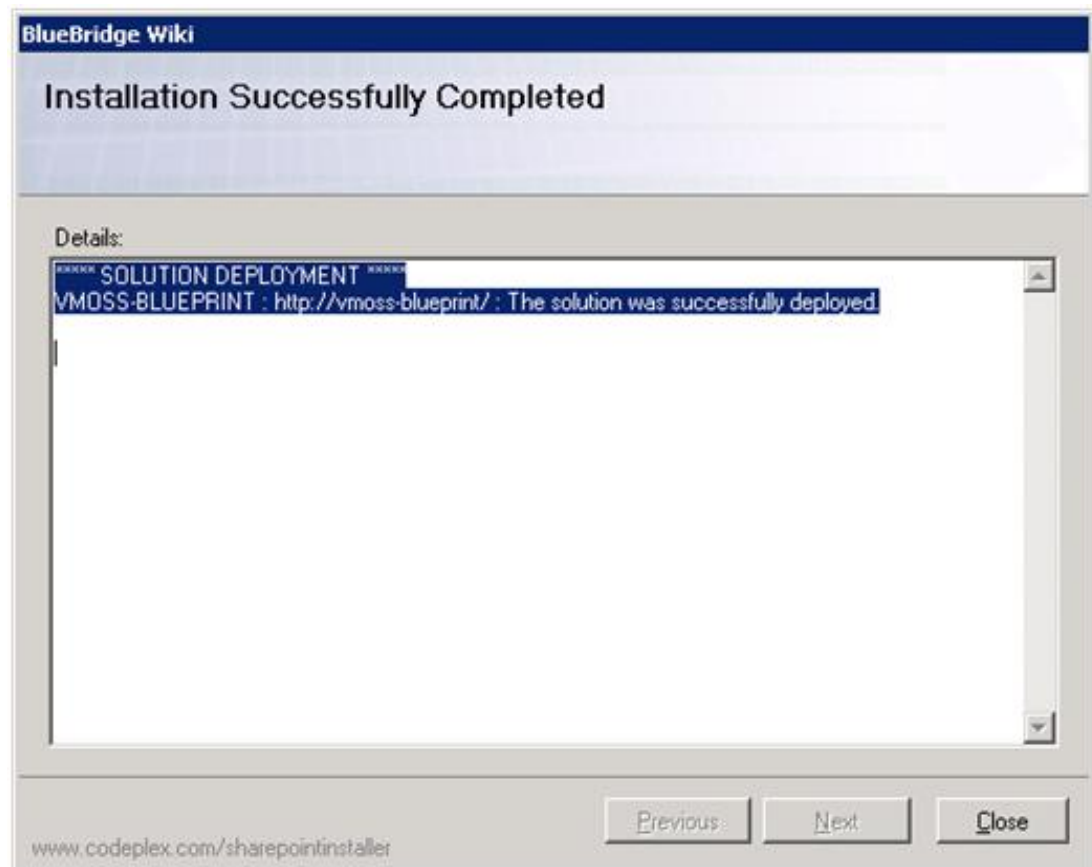
Once you have selected the relevant web applications, the wizard will proceed to install the Wiki Extensions on your server.



Click **Next**.



If you see this next screen, then the Extensions have been installed successfully and you can close the wizard.



The next step is to copy the valid License Key file to your server.

### 2.3 License Key

#### License Key

If you install the module BlueBridge.Wiki.Trial, then a trial license will automatically be generated and you can commence testing immediately. If you receive a separate license key from us (e.g. to extend your trial or after you have purchased), then you will need to copy this key to:

***Program Files\Common Files\Microsoft Shared\web server extensions\12\Licenses.***

### 2.4 Preparation for Import

#### Preparation for Import

Before you can use the function "Import: Add from template" (which you can find in the wiki settings), you must first configure the wiki template in the web.config.

Please note that this step is not necessary if the source library is located on the root of your SharePoint site. If you want to build up a template library, then we recommend doing this on the top level site as no changes to the web.config are necessary. More information on this feature [can be found here](#).

If you wish to use an existing wiki library as a template for further wiki libraries (and this library is not located on the top level), then you will have to follow the steps below. Note that, due to authentication and security reasons, it is not possible to source a template from a different server. If you need to import from other sources, such as Microsoft Word, please contact us.

#### Defining existing libraries as templates

You will need to add the following two sections to your web.config, which in most cases (assuming you are using Port 80) can be found here: **C:\inetpub\wwwroot\wss\VirtualDirectories\Default80**. As with all changes to the web.config, we recommend making a backup copy of the file before proceeding.

No changes are made to the existing libraries. All we are doing at this stage is telling SharePoint that it can use these libraries as templates when using our Import function.

The first section comes right at the start. You should add the **bold text** to the web.config (the rest is already there):

```
<?xml version="1.0" encoding="UTF-8" standalone="yes"?>
<configuration>
  <configSections>

    <sectionGroup name="BlueBridge.Wiki">
      <section name="WikiTemplates"
type="BlueBridge.SharePointExtensions.Galleries.GalleryConfigurationSection,BlueBridge.Spex.Utls, Version=2.1.0.0, Culture=Neutral, PublicKeyToken=8ad6826c1afbd920" />
    </sectionGroup>
```

After this, a number of other sectionGroups may be listed. Do not change any existing entries. At the end of these groups, you will see the following tag:

```
</configSections>
```

Then scroll to the bottom of the web.config. Just before the **</configuration>** tag, add the following text...

```
<BlueBridge.Wiki>
  <WikiTemplates defaultGallery="localwiki" >
    <add name=" project-small " title=" Project Small " type="Server" url="
http://sharepointserver/sites/wikitemplates" list=" ProjectSpecificationSmall
"/>
    <add name=" project-large " title=" Project Large " type="Server" url="
http://sharepointserver/sites/wikitemplates" list=" ProjectSpecificationLarge
"/>
  </WikiTemplates>
</BlueBridge.Wiki>
</configuration>
```



... and then change the highlighted tags accordingly.

In this case, we have two wiki libraries that we would like to use as templates - one for small project specifications (marked in yellow) and one for large projects (green). For each template you want to define, you will have to include a line beginning with `<addname="... />`

The highlighted tags should be edited according to the following scheme:

**`<add name="<internal name>" title="<display name in template list>" type="Server" url="<url of the template site>" list="<name of wiki library>" />`**

Remember that the URL should not include endings like "default.aspx" or the final "/", so you may have to delete some text if you are using copy & paste.

Here is another example of how this might look:

```
<add name="project-de" title="Project1-german" type="Server"
url="http://vwss-local/teamsite-de" list="wikibibliothek"/>
```

```
<add name="project-en" title="Project2-english" type="Server"
url="http://vwss-local/teamsite1" list="wikilibrary"/>
```

In this case, the German wiki library is located on a teamsite entitled "teamsite-de" and the library itself is called "wikibibliothek", and the English template is located on a teamsite called "teamsite1" in a wiki library called simply "wikilibrary".

As described in the user guide, you will then see a screen such as this when you want to import:

WSS Root > wiki1 > Wiki Pages > Wiki Settings > Add from Template Settings

### Add wiki entries from template

Create wiki entries based on pre-defined wiki templates

Choose a template

Configuration Templates

☐ Project1-german

☐ Project2-english

List Templates

☐ Installation Guide - Content

Import

Cancel

The templates configured using the method above are to be found in the section "Configuration Templates". Any templates stored on the root, [as described here](#), can be found under "List Templates".

#### Note:

- Due to authentication issues, the wiki template libraries must be on the same server.
- Since you are only importing pages from the library and not the library itself, the language of the source and target sites is irrelevant.
- The user who imports the pages must have at least viewing privileges for the wiki template libraries.

### 2.5 Adding your Logo to Exports

#### Adding your Logo to Exports

One of the key advantages in using the Wiki Extensions is the ability to export your wiki libraries as PDF files, allowing you to generate documents quickly to pass on to customers, employees and partners. To improve the professionalism of these documents, we recommend using an XSL Transformation, which will ensure that Corporate Guidelines are adhered to throughout the document. As the programming of XSLTs can be complicated, we would be happy to assist you in doing this.

One quick and easy way of improving the look and feel of your export documents without programming knowledge is to add your company logo to the first page of the export.

Simply rename your logo as “logo.png” and copy it to the “common files” directory on the SharePoint server:

***...\\Microsoft Shared\\Microsoft Shared\\web server extensions\\12\\TEMPLATE\\LAYOUTS\\BlueBridge.Wiki\\export***

The full path would therefore look like this on an English server where the common files are on the C drive:

***C:\\Program Files\\Common Files\\Microsoft Shared\\Microsoft Shared\\web server extensions\\12\\TEMPLATE\\LAYOUTS\\BlueBridge.Wiki\\export***

For best results, you should save the images in a resolution of 110 dpi, otherwise these may be displayed inaccurately in the Adobe Reader software. This is because Adobe Reader resizes images to this resolution by default. If an image

has been saved in 96dpi, for example, then Reader will automatically scale it up, often producing blurred images. You can also avoid this problem by changing the default resolution in the Reader.

The file should be no more than 47px high.

### 2.6 Installation via STSADM

## Installation via STSADM

These steps will help you install the Wiki Extensions manually via the STSADM tool. It is not recommended that you do this unless you have experience with STSADM, and in the majority of cases, the [installation wizard](#) will be sufficient for your needs.

### Step 1: Installation Package

The first step is to download and unzip the installation package to your server. We recommend you copy the files into a directory that is easy to find, such as c:\install. You can always delete it later.

### Step 2: Prepare for STSADM Operations

Open up the command prompt (CMD) and navigate to C:\Program Files\Common Files\Microsoft Shared\web server extensions\12\BIN

### Step 3: Add Solutions

This uploads the solutions into SharePoint's solution store but does not yet activate them.

Type in the command: `stsadm -o addsolution -filename c:\install\BlueBridge.wiki.wsp`

You can then repeat this command for all the other WSP files included in the installation package.

### **Step 4: Deploy BlueBridge.Core**

Since this core module must be active before any other modules can be installed, it must be handled separately and deployed first.

Type in the command: `stsadm -o deploysolution -name bluebridge.core.wsp -immediate -allowgacdeployment`

### **Step 5: Execute Deployment of BlueBridge.Core**

As stated above, the core module must be activated before the other modules can be deployed.

Type in the command: `stsadm -o execadmsvcjobs`

### **Step 6: Deploy other modules**

You can now deploy all the other modules.

Type in the command `stsadm -o deploysolution -name bluebridge.wiki.wsp -immediate -allowgacdeployment -allcontenturls`

You can then repeat this immediately for the other WSPs.

### **Step 7: Execute Deployment of other Modules**

Now you can activate all the modules that you queued up for deployment in Step 6 by using the command:

```
stsadm -o execadmsvcjobs
```

### **Step 8: Check Deployment**

Open up the central administration and navigate to Operations -> Solutions Management. If all the solutions are listed as globally deployed or deployed to a specific web server, then you have installed them correctly.

Central Administration > Operations > Solution Management

### Solution Management

This page has a list of the Solutions in the farm.

Name	Status	Deployed To
<a href="#">bluebridge.core.wsp</a>	Deployed	Globally deployed.
<a href="#">bluebridge.wiki.extras.console.wsp</a>	Deployed	Globally deployed.
<a href="#">bluebridge.wiki.extras.stapling.wsp</a>	Deployed	Globally deployed.
<a href="#">bluebridge.wiki.extras.webparts.wsp</a>	Deployed	Globally deployed.
<a href="#">bluebridge.wiki.trial.wsp</a>	Deployed	Globally deployed.
<a href="#">bluebridge.wiki.wsp</a>	Deployed	http://wss2007demo01/

## Step 9: Finalise Deployment



In the central administration, navigate to Application Management -> Manage Web Application Features

Activate BlueBridge Core Components.Install

and then BlueBridge.Wiki.Install

### Manage Web Application Features

This page allows you to manage web application features.

		Web Application: <a href="#">http://wss2007demo01/</a>	
Name		Status	
 <b>BlueBridge Core Components.Install</b> Common used Components used in different BlueBridge Solutions		<a href="#">Deactivate</a>	<a href="#">Active</a>
 <b>BlueBridge.Wiki.Install</b> Enables Bluebridge Wiki Extensions for Sharepoint		<a href="#">Deactivate</a>	<a href="#">Active</a>



## Step 10: IISreset

In some configurations, it may be necessary to perform an IISreset at this stage.

### 2.7 Wiki Webparts

## Wiki Webparts

In most cases, the wiki webparts will be installed automatically.

Should you prefer to install them manually, please download the relevant [DWP files here](#).

This includes webparts for:

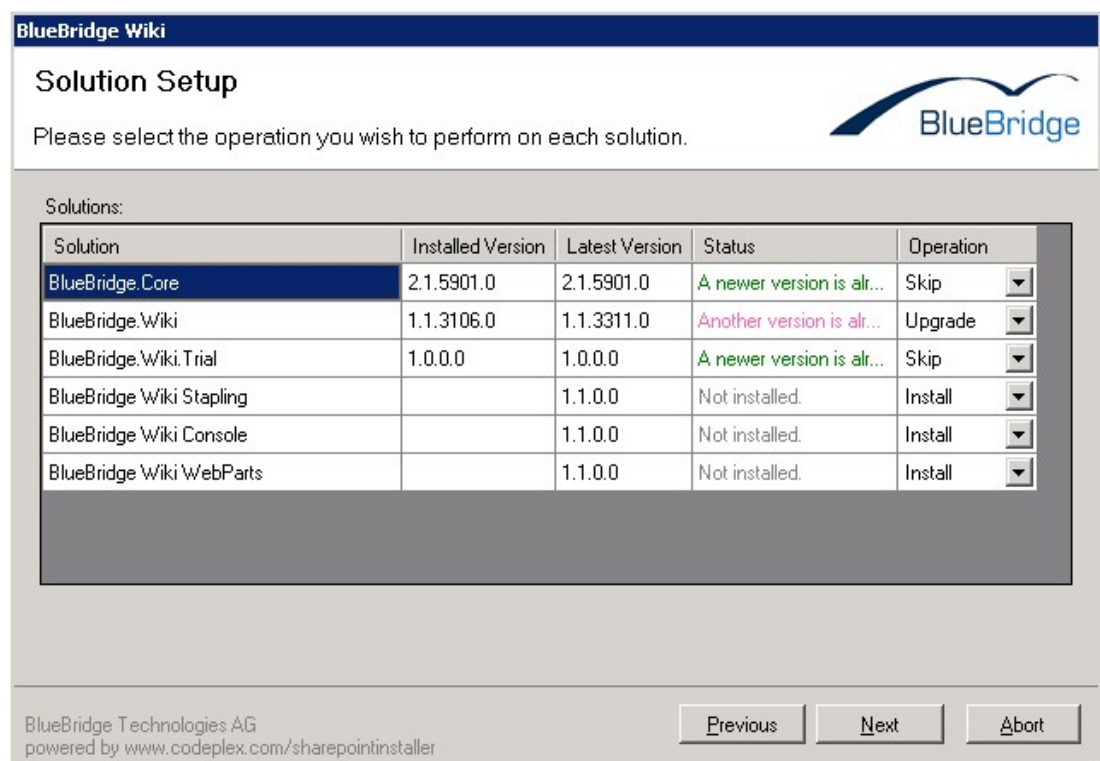
- Navigation
- Related Links
- Related Documents

Please note that you may have to add the relevant safe controls to your web.config.

### 3. Upgrade

## Upgrade

If you already have a previous version installed, the installer will prompt you for the next appropriate action:



Depending on your system the follow operations may be available:

**Install:** The solution is installed (beause it has not yet been installed)

**Upgrade:** The solution is upgraded without reinstallation

**Repair:** The solution is retracted from the solution store (uninstalled) and installed again.

Important:

If you are upgrading from a previous version of the Wiki Extensions, or are adding the optional components, you will have to make changes to the web.config.

### 3.1 Upgrading the webconfig

## Upgrading the Web.Config

If you have a previous version installed (version 1.0.x, regardless of the revision ID), you will need to follow these steps. If you already have version 1.1.x, you will not have to carry this out.

Step 1: [Install/Upgrade the Solutions](#)

Step 2: Add the following entries to the web.config:

#### Safe Controls

These are necessary so that administrators and site owners can use the new webparts. If you have existing safe control entries, then you should simply add these at the same level.

```
<SharePoint>
  <SafeControls>
    <SafeControl Assembly="BlueBridge.Spex.Wiki, Version=1.0.0.0,
Culture=neutral, PublicKeyToken=b2b93deembe77bad3"
Namespace="BlueBridge.SharePointExtensions.Wiki.WebControls" TypeName="*"
/>
    <SafeControl Assembly="BlueBridge.Spex.Wiki.WebParts, Version=1.0.0.0,
Culture=neutral, PublicKeyToken=b2b93deembe77bad3"
Namespace="BlueBridge.SharePointExtensions.Wiki.WebParts" TypeName="*" />
  </SafeControls>
</SharePoint>
```

### **Redirects for the New Versions**

These are necessary so that SharePoint knows where to find the latest version and does not get confused about the version numbers.

```
<runtime>
  <assemblyBinding xmlns="urn:schemas-microsoft-com:asm.v1">
    <!-- Wiki -->
    <dependentAssembly>
      <assemblyIdentity    name="BlueBridge.Spex.Wiki.WebParts"
publicKeyToken="b2b93deebe77bad3" culture="neutral" />
      <bindingRedirect oldVersion="1.0.0.0" newVersion="1.1.0.0" />
    </dependentAssembly>
    <dependentAssembly>
      <assemblyIdentity    name="BlueBridge.Spex.Wiki"
publicKeyToken="b2b93deebe77bad3" culture="neutral" />
      <bindingRedirect oldVersion="1.0.0.0" newVersion="1.1.0.0" />
    </dependentAssembly>
    <dependentAssembly>
      <assemblyIdentity    name="BlueBridge.Spex.Wiki.Export"
publicKeyToken="b2b93deebe77bad3" culture="neutral" />
      <bindingRedirect oldVersion="1.0.0.0" newVersion="1.1.0.0" />
    </dependentAssembly>
    <dependentAssembly>
      <assemblyIdentity    name="BlueBridge.Spex.Wiki.WebServices"
publicKeyToken="b2b93deebe77bad3" culture="neutral" />
      <bindingRedirect oldVersion="1.0.0.0" newVersion="1.1.0.0" />
    </dependentAssembly>
    <!-- IBEX -->
    <dependentAssembly>
      <assemblyIdentity name="ibex20" publicKeyToken="bd32d4f9ec352863" />
      <bindingRedirect    oldVersion="4.0.0.0-4.99.9999.9999"
newVersion="4.5.2.7" />
    </dependentAssembly>
  </assemblyBinding>
</runtime>
```

### Webparts

If you have already manually installed our webparts (e.g. Navigation webpart), we recommend removing these manually when installing the new version of the Wiki Extensions. They will then be added automatically.



### 4. Uninstalling

## Uninstalling

During the installation process a number of SharePoint solutions are installed on your server. To remove these solutions you can either start “setup.exe” again and remove the solution using the wizard, or you can also remove the solutions directly in the SharePoint Central Administration.

Please note that BlueBridge.Core is also required for other solutions from BlueBridge Technologies AG. Removing it will cause these to cease functioning.

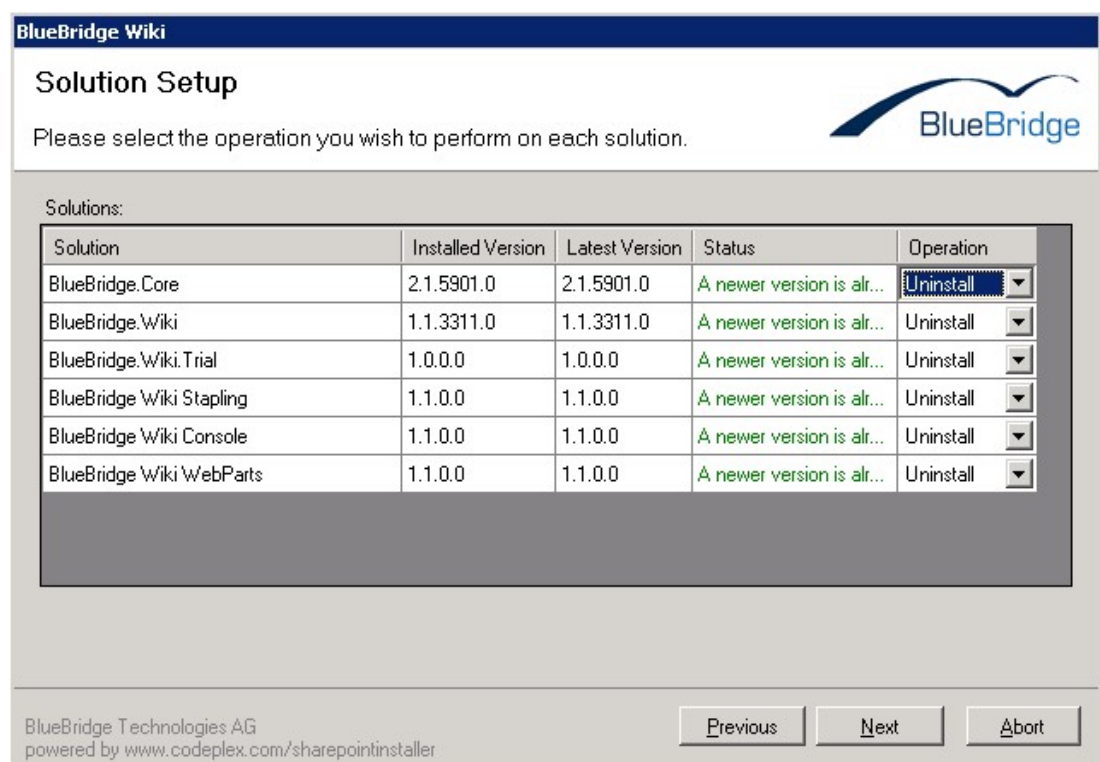
If you want to remove all the modules, we suggest you remove the optional modules first (the webparts, the stapling and the trial), then the Wiki Extensions themselves and finally BlueBridge.Core.

### 4.1 Using the Wizard

#### Uninstalling using the Wizard

To uninstall the BlueBridge Wiki Extensions with the wizard, start "setup.exe" again.

Choose **Uninstall** to remove the solutions.



#### Note:

Be careful when uninstalling "BlueBridge.Core", since this solution is required by several solutions provided by BlueBridge Technologies AG (not just the Wiki Extensions).

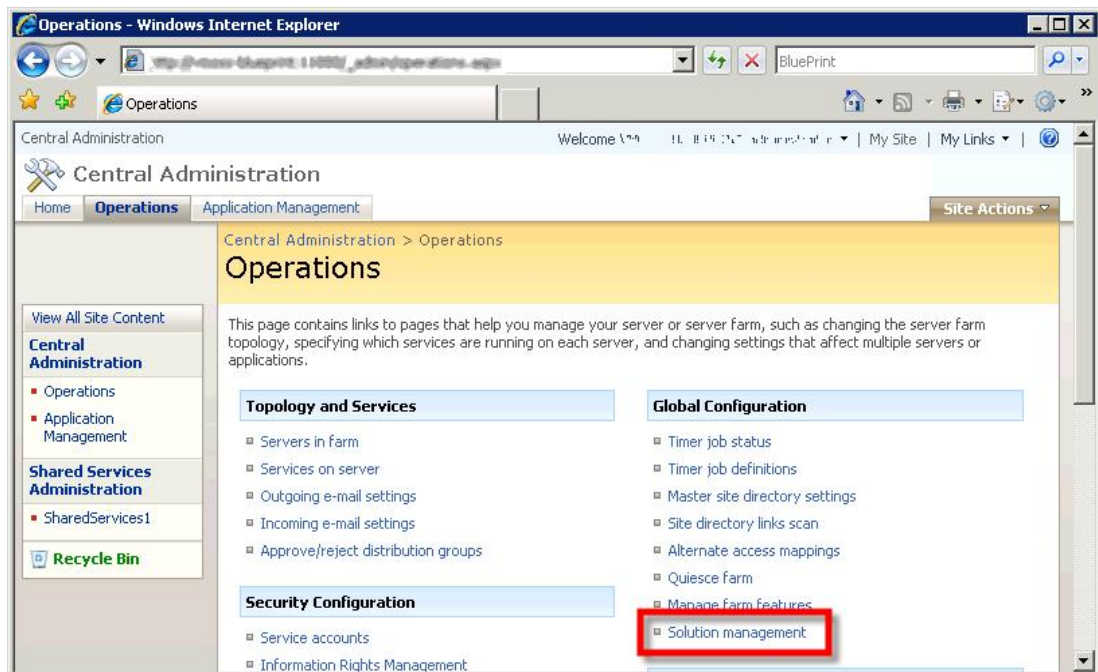


### 4.2 Using the Central Administration

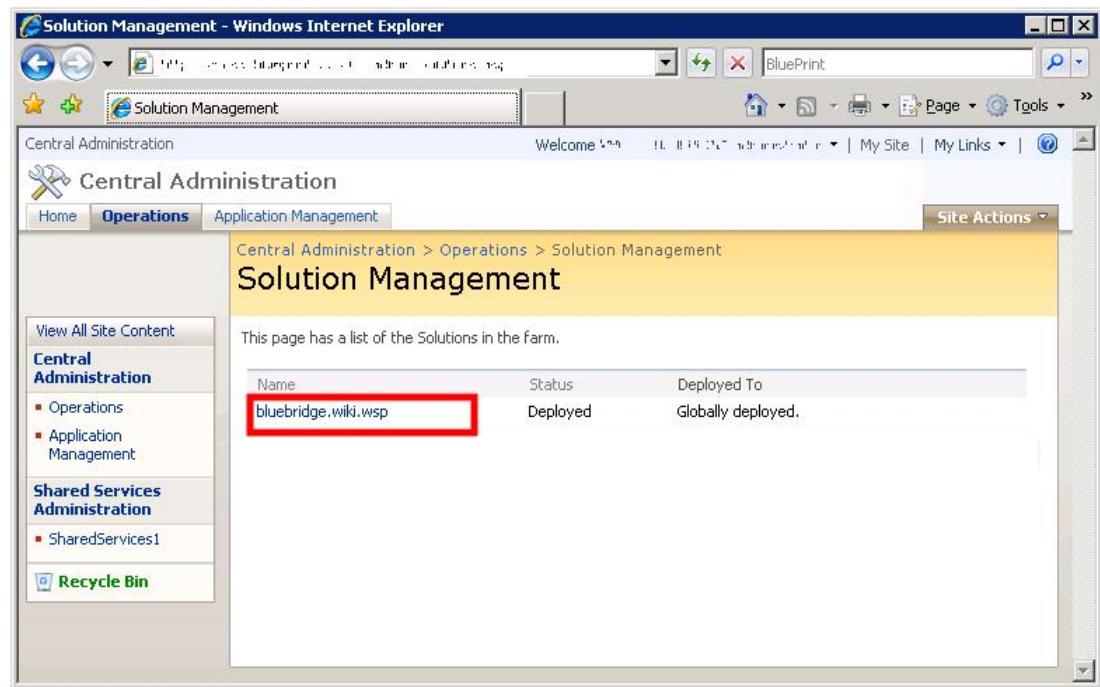
## Uninstalling using the Central Administration

To uninstall using the Central Administration, follow these steps:

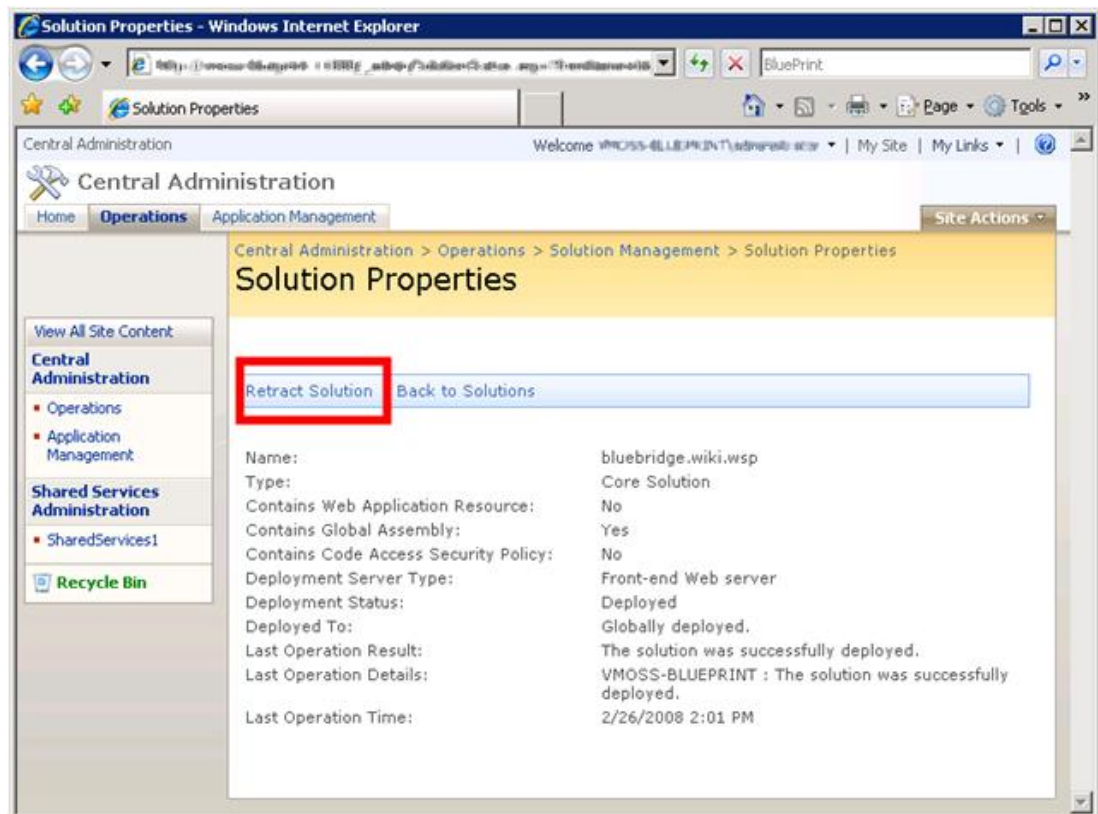
Open the SharePoint Central Administration and navigate to ***Solution Management*** in the section ***Operations***.



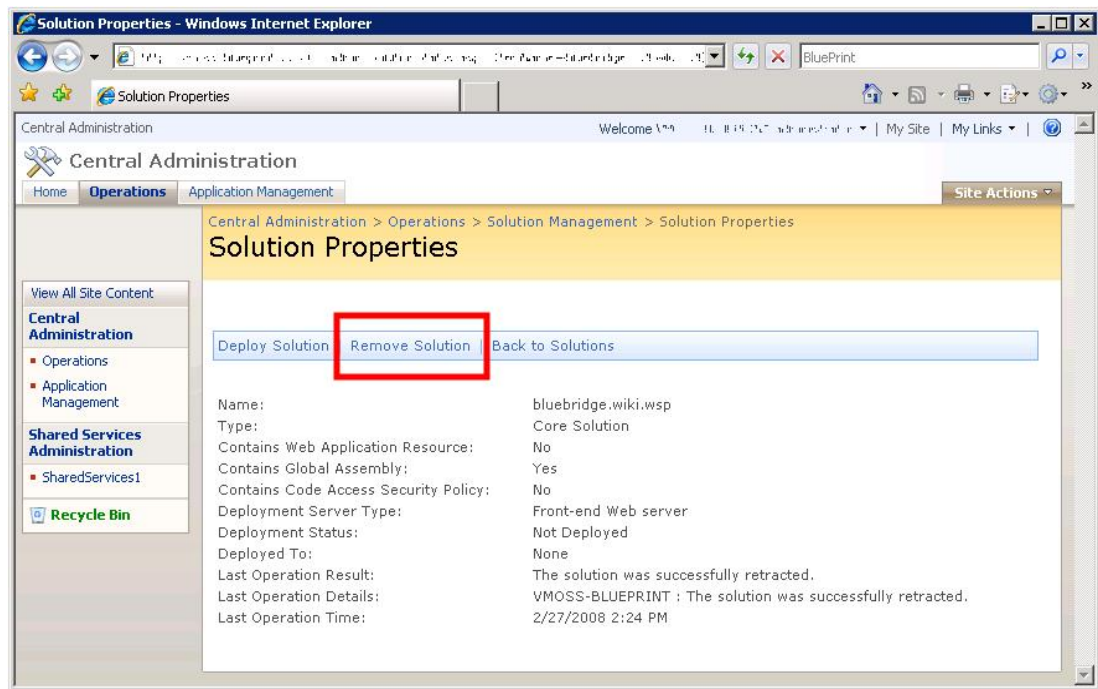
Here you will see all the installed solutions. Click on ***bluebridge.wiki.wsp***.



Click on ***Retract Solution...***



and then on **Remove Solution**.



Please note that BlueBridge.Core is also required for other solutions from BlueBridge Technologies AG. Removing it will cause these to cease functioning.

If you want to remove all the modules, we suggest you remove the optional modules first (the webparts, the stapling and the trial), then the Wiki Extensions themselves and finally BlueBridge.Core.

### 5. Activation

#### Activating the Wiki Extensions

If you have installed the module for Wiki Stapling, you will not have to activate the site feature, as this will automatically be activated the Wiki Extensions in new sites. The instructions given here will, however, help you deactivate them on sites where you prefer not to use them; and will be necessary if you have not installed the stapling solution. Note that the site collection feature always has to be added manually.

There are two features that can be activated:

The site collection feature (Wiki Fields) - This adds extra columns to wiki libraries for optimal sorting when exporting to PDF

The site feature - This adds additional functions to all wiki libraries on a single site. To provide you with more flexibility on where you want to use these features, you can activate this for each individual workspace.

The site collection feature is optional and is not required for any other functionality (you can export without it, but it helps you structure your exports better). The site feature needs to be installed before you can use any of the BlueBridge Wiki Extensions.



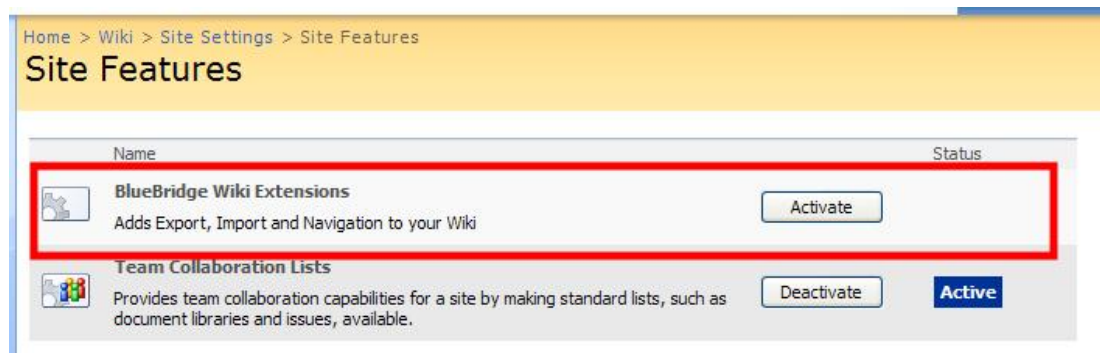
### 5.1 Site Feature

#### Activating the Site Feature

To provide you with maximum flexibility, you can choose which platforms you would like to configure to use the Wiki Extensions.

To activate the site feature on a site/workspace, navigate to the **site settings** and click on **site features**.

Then activate the **BlueBridge Wiki Extensions**



Of course the Extensions can be deactivated at a later stage by the same method.

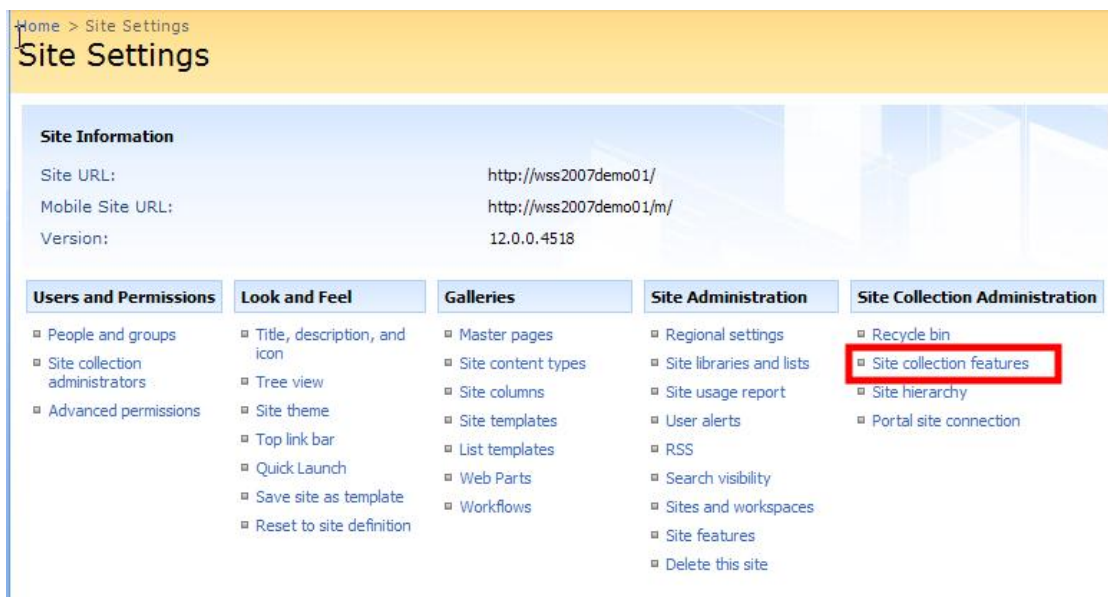
### 5.2 Wiki Fields

## Activating the Wiki Fields

The activation of the site collection feature is optional. Although not required for the use of the PDF export function, it created two new attributes for the wiki articles, making it easier to sort and manage your information.

To activate this site collection feature, navigate to the **site actions** menu and click on **site settings**. If you are not already on the top level site, then click on the option in the right-hand column to manage the top level site collection features.

Click on **site collection features**.



You can now activate the feature BlueBridge Wiki Fields:



Please note that you will still have to add the wiki fields to the libraries you want to use them in. This is done through the BlueBridge Wiki Settings of the wiki library, and is explained in more detail in the User Manual.

### 5.3 Rich Text Editor

## Rich Text Editor

The rich text editor replaces the standard editor used to edit rich text in list items. So if a column is set as type "multiple lines of text" and allows rich text editing, then you can take advantage of the features provided by the Wiki Extensions, even though you're not working with a wiki library. For more information on how this can be used, please refer to our [user guide](#).

### Installation/Activation

The feature has to be enabled at site collection level. Please note that the functionality is installed by default as a hidden feature.

- Option 1: A server administrator can activate the feature individually for each site collection
- Option 2: You can make the feature "BlueBridge.Wiki.Editor" visible to site collection administrators, allowing them to activate it themselves.

#### Option 1: Individual activation of the feature

The following command has to be executed directly on the server by a server administrator. Note that this action must be repeated for each site collection where the advanced editor should be activated.

***stsadm -o activatefeature -name BlueBridge.Wiki.Editor -url***

***http://myserver/sites/mysite***

### Option 2: Visibility of the feature

Open the file ***C:\Program Files\Common Files\Microsoft Shared\web server extensions\12\TEMPLATE\FEATURES\BlueBridge.Wiki.Editor\feature.xml*** and change the attribute "Hidden" from ***true*** to ***false***.

```
<?xml version="1.0" encoding="UTF-8"?>
```

```
<Feature Id="23A1930B-3339-4396-BA7F-1BD1B6CA08E2"
```

```
Title="$Resources:Feature_Title;"
```

```
Description="$Resources:Feature_Description;"
```

```
ImageUrl="BlueBridge.GenericFeature.gif"
```

```
Version="1.0.0.0"
```

```
Scope="Site"
```

```
Hidden="FALSE"
```

```
ActivateOnDefault="false"
```

```
DefaultResourceFile="_Res" xmlns="http://schemas.microsoft.com/sharepoint/">
```

```
<ElementManifests>
```

```
<ElementManifest Location="actions.xml" />
```

```
</ElementManifests>
```

```
</Feature>
```

After changing the above file, the feature has to be re-installed in order to publish the new functionality. Use the following command on the server:

```
stsadm -o installfeature -name BlueBridge.Wiki.Editor -force
```

The option -force is needed to update the existing feature with the new settings.

Alternatively, you can perform an IISreset.

After this procedure, the feature can be activated by selecting **Site Settings - Site Collection Administration** and then **Manage site collection features**.



BlueBridge Enhanced Editor  
Use Wiki Editor for all rich text fields

Activate

### 6. Help and Support

## Help and Support

You have now installed and activated the Wiki Extensions.

For more information on how to use these in your organisation, please refer to the User Guide.

Should you have any questions, please do not hesitate to contact our team at [info@bluebridge.de](mailto:info@bluebridge.de).

### 6.1 Release Notes

## Release Notes

Here you will see the new features and bug fixes listed in each version from 1.1:

### Version 1.1.5218 (July 2011)

- Reorganize chapters
- Chapter numbers can be formatted automatically (e.g. 1. instead of 1)
- Change made to rich text fields in lists, so that only enhanced rich text fields use the BlueBridge Editor. Standard rich text fields use the Microsoft editor to prevent users from adding images and tables.
- German localization for PDF export
- Various bug fixes for the PDF export
- Improved error handling for the PDF export and better management of unclean HTML
- New XSLT functions for PDF export and webparts
- Fixed bug when checking in/approving articles with a + in the title
- Fixed the use of auto webparts on pages that have not yet been checked in
- Improved layout of AddWikiFields
- Site collection administrator rights no longer necessary to remove wiki fields

### Version 1.1.3917 (Aug 2010)



- Media content (e.g. videos und audio objects including Flash) is now supported
- A reference folder can now be applied to several libraries
- Editor upgrade (upgraded to Cute Version 6.6), resulting in faster loading times
- Support for more than 4 rich text editors in a list
- Fixed bug so that page breaks inside tables no longer lead to performance problems when exporting to PDF
- Fixed bug where connections to discussion boards were not visible in the Wiki Settings
- WYSIWYG Mode CSS: Path changed to core css, web.Language is now used instead of 1031
- Fixed bug where HTTP and HTTPS were handled incorrectly
- Fixed bug in the console so that new articles can created on the root site
- Fixed rendering bugs in the PDF Export
- JQuery upgrade (to version 1.4.2)

### **Version 1.1.3518 (Feb 2010)**

- Added auto thumbnail feature
- Modified Table of Contents CSS, so that they are not affected by changes to other styles
- Fixed bug in which special characters were not supported in wiki links
- Fixed bug in which discussion links did not support special characters

### **Version 1.1.3313 (Nov 2009)**

- Brand new editor

- Considerable improvements to Copy & Paste processes, cleaning up HTML code from applications like Microsoft Word
- Wiki console and webparts are automatically installed
- Single page exports no longer have a covering sheet
- A number of bug fixes and performance improvements